

# Supply List

Donna Ross

1-281-851-9530

[dje-ross@swbell.net](mailto:dje-ross@swbell.net)

<https://www.stampedsophisticates.com/>



[Tidings & Trimmings](#)  
[Photopolymer](#)  
[Stamp Set](#)  
[\(English\) - 153503](#)

Price: \$18.00



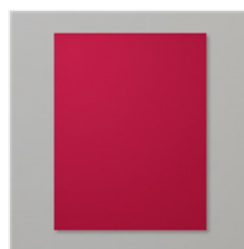
[Tidings & Trimmings Bundle](#)  
[\(English\) - 155716](#)

Price: \$40.50



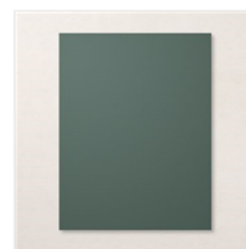
[Cherry Cobbler](#)  
[Classic Stampin'](#)  
[Pad - 147083](#)

Price: \$11.00



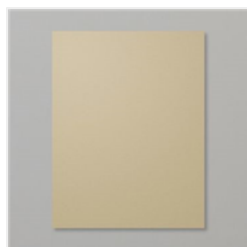
[Cherry Cobbler 8-1/2" X 11"](#)  
[Cardstock -](#)  
[119685](#)

Price: \$14.00



[Evening Evergreen](#)  
[8-1/2" X 11"](#)  
[Cardstock -](#)  
[155574](#)

Price: \$9.25



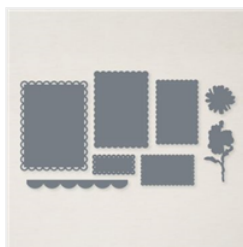
[Crumb Cake 8-1/2" X 11" Cardstock -](#)  
[120953](#)

Price: \$14.00



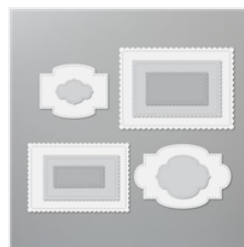
[Basic White 8-1/2" X 11" Cardstock -](#)  
[159276](#)

Price: \$13.00



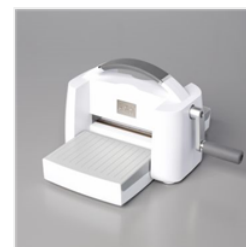
[Scalloped](#)  
[Contours Dies -](#)  
[155560](#)

Price: \$35.00



[Stitched So](#)  
[Sweetly Dies -](#)  
[151690](#)

Price: \$32.00



[Stampin' Cut & Emboss Machine -](#)  
[149653](#)

Price: \$140.00



[Multipurpose](#)  
[Liquid Glue -](#)  
[110755](#)

Price: \$6.50



[Stampin'](#)  
[Dimensionals -](#)  
[104430](#)

Price: \$5.00