

Branching out Dies & Perennial Lavender DSP

Supply List

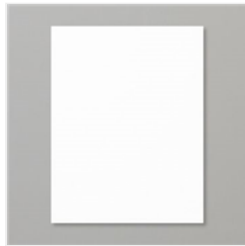
Rachel Brumley
(479) 6443318

rachel@stampwithrachel.com
<http://www.stampwithrachel.com>



[Peaceful Deer
Photopolymer
Stamp Set
\(English\) - 156891](#)

Price: \$22.00



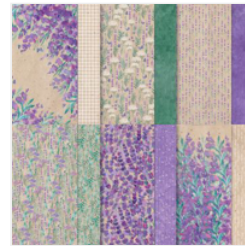
[Basic White 8-1/2"
X 11" Cardstock -
159276](#)

Price: \$13.00



[Gorgeous Grape
8-1/2" X 11"
Cardstock -
146987](#)

Price: \$14.00



[Perennial
Lavender 12" X
12" \(30.5 X 30.5
Cm\) Designer
Series Paper -
162593](#)

Price: \$12.50



[Basic White
Medium Envelopes
- 159236](#)

Price: \$15.00



[Highland Heather
Stampin' Blends
Combo Pack -
154887](#)

Price: \$12.00



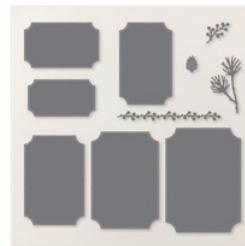
[Gorgeous Grape
Classic Stampin'
Pad - 147099](#)

Price: \$11.00



[Stampin' Cut &
Emboss Machine -
149653](#)

Price: \$140.00



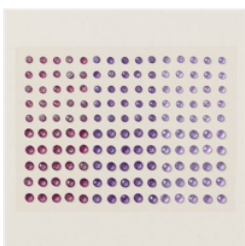
[Branching Out
Dies - 165775](#)

Price: \$29.00



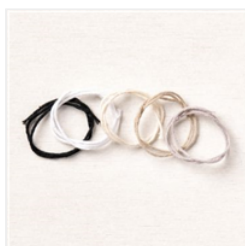
[Birch Wood 3D
Embossing Folder
- 164069](#)

Price: \$12.00



[Purple Fine
Shimmer Gems -
162611](#)

Price: \$8.00



[Baker's Twine
Essentials Pack -
155475](#)

Price: \$12.00



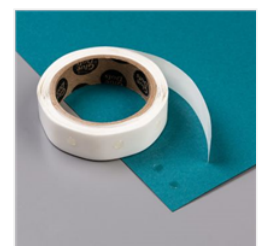
[Bone Folder -
102300](#)

Price: \$8.00



[Paper Trimmer -
152392](#)

Price: \$28.00



[Mini Glue Dots -
103683](#)

Price: \$8.00

Branching out Dies & Perennial Lavender DSP

Supply List

Rachel Brumley

(479) 6443318

rachel@stampwithrachel.com

<http://www.stampwithrachel.com>



[Stampin'
Dimensionals -
104430](#)

Price: \$5.00



[Multipurpose
Liquid Glue -
110755](#)

Price: \$6.50