

# Supply List

Christy Fulk

[christyfulk@createwithchristy.com](mailto:christyfulk@createwithchristy.com)

<https://www.createwithchristy.com/>



[Merriest Moments Photopolymer Stamp Set \(English\) - 156353](#)  
Price: \$22.00



[Merriest Frames Hybrid Embossing Folder - 156385](#)  
Price: \$39.00



[Cherry Cobbler Classic Stampin' Pad - 147083](#)  
Price: \$11.00



[Evening Evergreen Classic Stampin' Pad - 155576](#)  
Price: \$8.00



[So Saffron Classic Stampin' Pad - 147109](#)  
Price: \$8.00



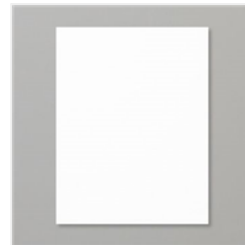
[Soft Succulent Classic Stampin' Pad - 155778](#)  
Price: \$8.00



[Soft Succulent 8-1/2" X 11" Cardstock - 155776](#)  
Price: \$9.25



[Cherry Cobbler 8-1/2" X 11" Cardstock - 119685](#)  
Price: \$14.00



[Basic White 8-1/2" X 11" Cardstock - 159276](#)  
Price: \$13.00



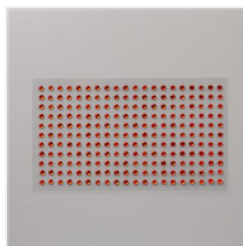
[Boughs Of Holly 12" X 12" \(30.5 X 30.5 Cm\) Designer Series Paper - 159600](#)  
Price: \$12.00



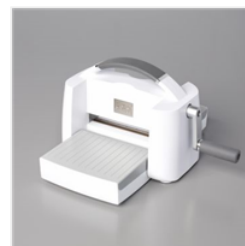
[Gold & Vanilla 3/8" \(1 Cm\) Satin Edged Ribbon - 159555](#)  
Price: \$8.00



[Gold Holly Leaves - 156311](#)  
Price: \$7.50



[Red Rhinestone Basic Jewels - 146924](#)  
Price: \$7.00



[Stampin' Cut & Emboss Machine - 149653](#)  
Price: \$140.00



[Wintry 3D Embossing Folders - 155433](#)  
Price: \$10.00

# Supply List

Christy Fulk

[christyfulk@createwithchristy.com](mailto:christyfulk@createwithchristy.com)

<https://www.createwithchristy.com/>



[Layering Circles  
Dies - 151770](#)

Price: \$35.00



[Stampin'  
Dimensionals -  
104430](#)

Price: \$5.00



[Multipurpose  
Liquid Glue -  
110755](#)

Price: \$6.50



[Mini Glue Dots -  
103683](#)

Price: \$8.00



[Stampin' Seal -  
152813](#)

Price: \$9.00