

# Supply List

Anne Granger

519-476-5473

[agranger21@outlook.com](mailto:agranger21@outlook.com)

[www.stampwithanne.com](http://www.stampwithanne.com)



[Perched In A Tree Bundle \(English\) - 159799](#)

Price: \$72.75



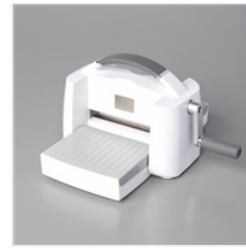
[Perched In A Tree Cling Stamp Set \(English\) - 159791](#)

Price: \$32.00



[Aspen Tree Dies - 159798](#)

Price: \$49.00



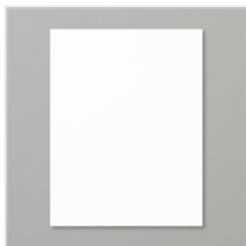
[Stampin' Cut & Emboss Machine - 149653](#)

Price: \$191.00



[Basic White 8-1/2" X 11" Cardstock - 159276](#)

Price: \$18.00



[Basic White 8-1/2" X 11" Thick Cardstock - 159229](#)

Price: \$24.00



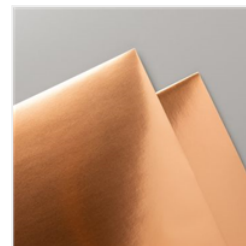
[Pool Party 8-1/2" X 11" Cardstock - 122924](#)

Price: \$20.00



[Kraft 6" X 6" \(15.2 X 15.2 Cm\) Paper Pack - 156325](#)

Price: \$8.25



[Copper Foil Sheets - 142020](#)

Price: \$7.00



[Splendid Day 12" X 12" \(30.5 X 30.5 Cm\) Specialty Designer Series Paper - 159666](#)

Price: \$21.00



[Early Espresso Classic Stampin' Pad - 147114](#)

Price: \$15.00



[Early Espresso Classic Stampin' Ink Refill - 119789](#)

Price: \$8.25



[Smoky Slate Classic Stampin' Pad - 147113](#)

Price: \$15.00



[Smoky Slate Classic Stampin' Ink Refill - 131159](#)

Price: \$8.25



[Baker's Twine Essentials Pack - 155475](#)

Price: \$16.50

# Supply List

Anne Granger  
519-476-5473  
[agranger21@outlook.com](mailto:agranger21@outlook.com)  
[www.stampwithanne.com](http://www.stampwithanne.com)



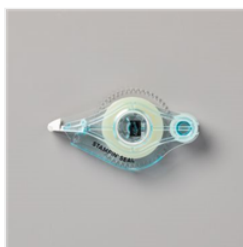
[Mini Glue Dots -  
103683](#)

Price: \$11.00



[Stampin' Seal -  
152813](#)

Price: \$12.25



[Stampin' Seal  
Refill - 152814](#)

Price: \$9.75



[Stampin'  
Dimensionals -  
104430](#)

Price: \$7.00



[Paper Trimmer -  
152392](#)

Price: \$39.00



[Paper Snips  
Scissors - 103579](#)

Price: \$16.50



[Clear Block D -  
118485](#)

Price: \$13.00



[Sponge Daubers -  
133773](#)

Price: \$12.25