

Supply List

Gayle Wheeler

941-650-7934

Gayle@Stampingville.com

www.Stampingville.com



[Cottage Greetings
Clear-Mount Stamp](#)

[Set](#)

139962

\$19.00



[Cottage Greetings
Wood-Mount Stamp](#)

[Set](#)

138940

\$26.00



[Watercolor Wash
Clear-Mount
Background Stamp](#)

139538

\$15.00



[Watercolor Wash
Wood-Mount
Background Stamp](#)

[Set](#)

138704

\$20.00



[Tiny Treat Boxes](#)

135829

\$7.00



[Mini Metallic
Clothespins](#)

133320

\$4.00



[Pool Party 1/4" Cotton
Ribbon](#)

134568

\$6.00



[Bermuda Bay Sequin
Trim](#)

137910

\$5.00

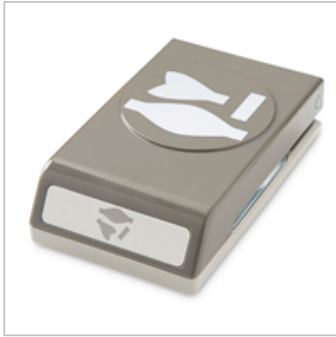
Supply List

Gayle Wheeler

941-650-7934

Gayle@Stampingville.com

www.Stampingville.com



Images © Stampin' UP! 1990-Current



Images © Stampin' UP! 1990-Current

[Bow Builder Punch](#)

137414

\$18.00

[Washi Label Punch](#)

138296

\$18.00

[Mini Glue Dots](#)

103683

\$5.25

[Sweet Li'l Things](#)

[Designer Series](#)

[Paper](#)

138447

\$11.00



Images © Stampin' UP! 1990-Current

[Pool Party 8-1/2" X 11" Cardstock](#)

122924

\$8.00

[Very Vanilla 8-1/2" X 11" Cardstock](#)

101650

\$9.00

[Pool Party Classic Stampin' Pad](#)

126982

\$6.50

[Tangelo Twist Classic Stampin' Pad](#)

133646

\$6.50