

# Supply List

Christy Fulk

[christyfulk@createwithchristy.com](mailto:christyfulk@createwithchristy.com)

<https://www.createwithchristy.com/>



[Lasting Joy Photopolymer Stamp Set \(English\) - 161442](#)  
Price: \$20.00



[Boho Blue Classic Stampin' Pad - 161650](#)  
Price: \$9.00



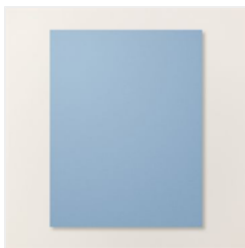
[Misty Moonlight Classic Stampin' Pad - 153118](#)  
Price: \$11.00



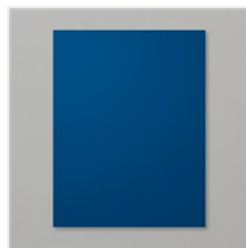
[Night Of Navy Classic Stampin' Pad - 147110](#)  
Price: \$11.00



[Crumb Cake Classic Stampin' Pad - 147116](#)  
Price: \$11.00



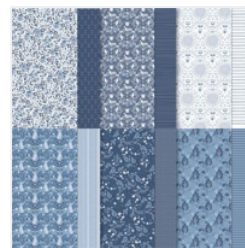
[Boho Blue 8-1/2" X 11" Cardstock - 161724](#)  
Price: \$11.50



[Night Of Navy 8-1/2" X 11" Cardstock - 100867](#)  
Price: \$14.00



[Basic White 8-1/2" X 11" Cardstock - 159276](#)  
Price: \$13.00



[Countryside Inn 12" X 12" \(30.5 X 30.5 Cm\) Designer Series Paper - 161467](#)  
Price: \$12.50



[Rhinestone Basic Jewels - 144220](#)  
Price: \$7.00



[Stampin' Cut & Emboss Machine - 149653](#)  
Price: \$140.00



[Countryside Corners Dies - 161471](#)  
Price: \$28.00



[Countryside Blossoms Embossing Folder - 161473](#)  
Price: \$8.50



[Tear & Tape Adhesive - 154031](#)  
Price: \$7.00



[Stampin' Dimensionals - 104430](#)  
Price: \$5.00

# Supply List

Christy Fulk

[christyfulk@createwithchristy.com](mailto:christyfulk@createwithchristy.com)

<https://www.createwithchristy.com/>



[Stampin' Seal -  
152813](#)

Price: \$9.00